

LITTLE INVESTMENT, GREAT SATISFACTION

IPA

It cleans your body,
caresses soul
and refreshes mind.

Healthy water

**YOU HAVE A WATER SCALE? AND SORROWS?
WE DON'T ANYMORE.**

Install an ionic polarizing appliance IPA:
it is a simple physical equipment,
which does not allow the development
of water scale and moreover,
it removes the old water scale forever!

Where can you use the IPA?

The appliance is designed for water treatment in closed and opened systems. For example, in heat exchangers, water piping systems, boilers, condensers, generators, heating systems, compressor plants, cooling and air-conditioning equipments, and wherever the possibility of forming a water scale exists.

Functionality of the IPA

3mm - thick layer of water scale on heat appliance lowers its effectivity by 20 %. 6millimeters by 35 %, which significantly increases the operating expenses. The IPA positively manifests itself as early as after few days.



Healthy water, IPA(ionic polarizing appliance) provides physical water treatment, it works with no external voltage, no magnets, no chemistry.

- 1) it removes old sediments and it does not allow the development of new ones, it saves energy and extends the life-time of appliances, an eco-friendly waste flows to the nature in the form of a fine sludge
- 2) water ionized this way increases PH, and it creates environment which is healthy for a human, but inappropriate for germs (Certificate of the Ministry of Health)
- 3) water treated by IPA has favourable influence on living organisms, both animal and plant cells process this water easier, so they have more energy to give out. Observed plants which were watered through IPA grow faster and are more massive.

The IPAs are installed in different large and small operations, communal boiler plants, houses and flats.

Of course, the IPA can be used in every operation with flowing water – for car washes, bakeries, laundries, dry-cleaners, hairdresser's, creameries, breweries, distilleries, restaurants, gardening, sprinkling systems, swimming pools, sauna, etc.

You save:

- Money
- Energy
- Abstergents
- Appliances
- Environment



IPA

...only advantages!

Thanks to IPA, higher effectiveness of heat transport

If the IPA is applied on older pipes, it causes dissolvment of existing solid sediments

The chemical composition of water does not change

IPA keeps the pipes from forming solid sediments in them

IPA works without operating, without external power source, without chemicals, without magnets

High effectiveness of IPA

After flowing through IPA, water is ionized for at least 24 hours

And price? Look at the enclosed pricelist. You will be pleasantly surprised

Trial period of IPA / 4 months – manufacturer returns money within this period

Return on investment into IPA in a short period of time

IPA keeps the internal surfaces from corrosion

3-year warranty

Technical description of the IPA

Ionic Polarizing Appliance – IPA – is an appliance for water treatment, which keeps the water scale from forming or it helps to remove it. IPA consists of a flow-through body which has an entrance and exit port. There are placed at least two electrodes in this body. Both are mutually from different conductible materials. Flowing water with these electrodes creates a galvanic wet cell. The electric voltage of this cell is enough to polarize the molecules of water. The intensity of this voltage is from 0,6 to 0,8 volts. This voltage depends on the electric conductivity of water. This effect can be used when the water has conductivity of 50 – 2000 $\mu\text{S}/\text{cm}^2$, that is, ordinary water which has the salt content of 50 – 2000 mg/l. When the water flows through these electrodes, the salts of calcium (Ca^{2*}), magnesium (Mg^*), iron ($\text{Fe}^{2*}, 3^*$), which are found in water as carbonates, sulphates and chlorides, dissociate into hydroxides. The consequence is, that these cations lose their capability to create crystal sediment loads in pipes, boilers, heat exchangers, etc. These carbonates are still created, but only as soft particles – sludge.

Technical requirements for IPA instalation

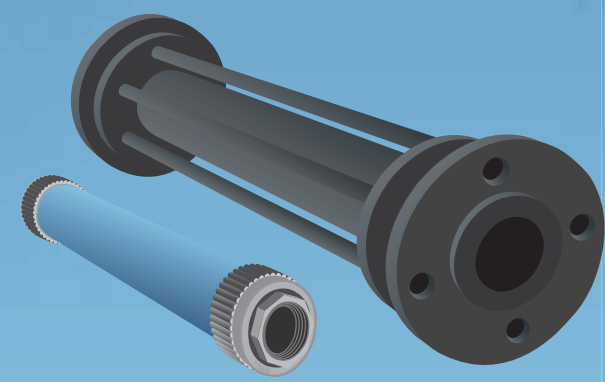
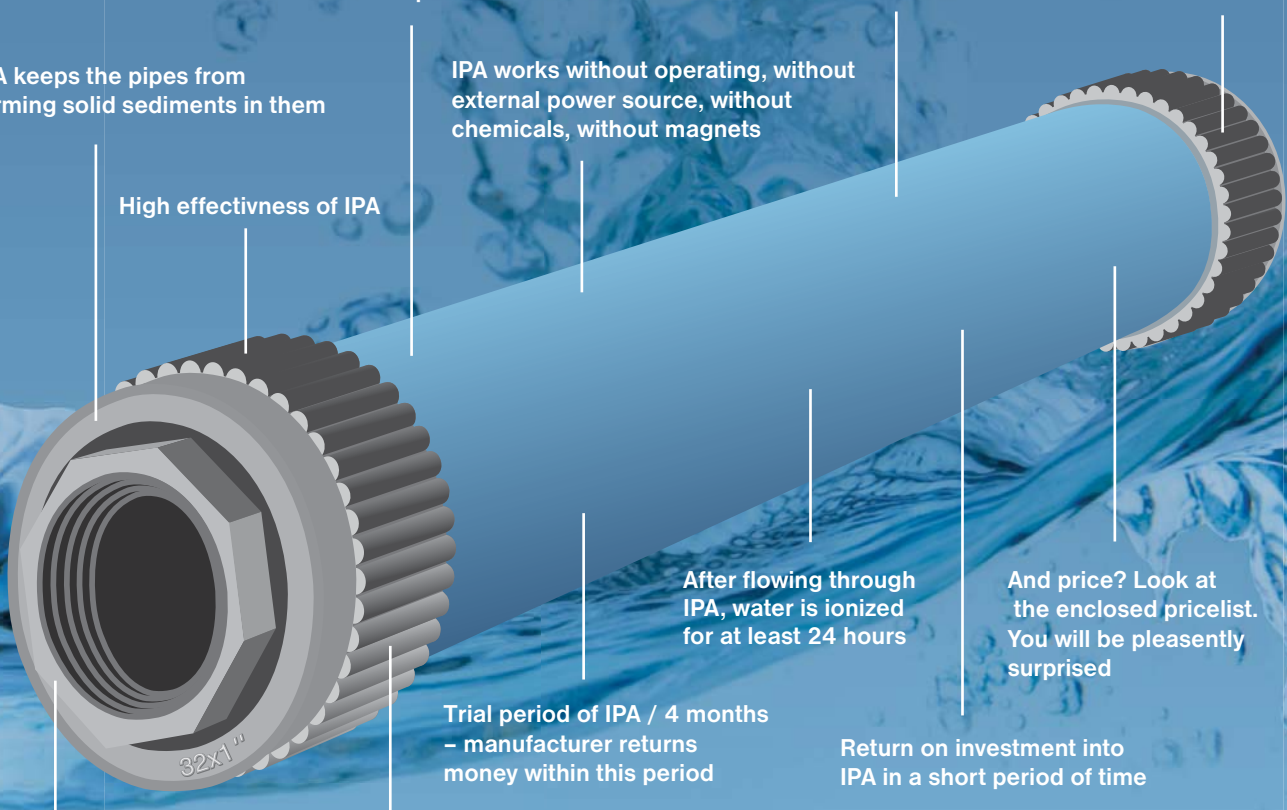
We install the IPA devices for waters with conductivity of 50 – 2000 $\mu\text{S}/\text{cm}^2$ (microsiemens per square centimeter).

Water temperature: 0 – 100 °C

In the system, where we use the IPA, there must not be an ion-exchange resin, electromagnetic system, or if you like, a system with a voltage supply built-in.

The maximum speed of the water stream through the appliance 4 ms^{-1} (we choose the type of the appliance also according to this figure, not only according to the internal area of pipe)

IPAs are dimensioned to the pressure up to 1MPa.



Certificates and approvals

The expertise of the Ministry of Health – the main hygienist of Slovak republic, which certifies the IPAs for fresh water treatment.

The certificate issued by the Technical testing institute, Piešťany (national corporation) confirming the safety of the IPA.

The logo for IPA (Innovative Water Purification) is displayed in a white circle. The letters 'IPA' are in a bold, dark green, sans-serif font.

ECONOMY • ECOLOGY • HEALTH

Two ECO, s.r.o.
Štúrova 27
902 03 Pezinok
SLOVAKIA

Montaža in svetovanje:

Vita Dva d.o.o.
Prvomajska ulica 39,
5000 Nova Gorica
T: +38631732324
E: info@vitadva.si
W: www.vitadva.si